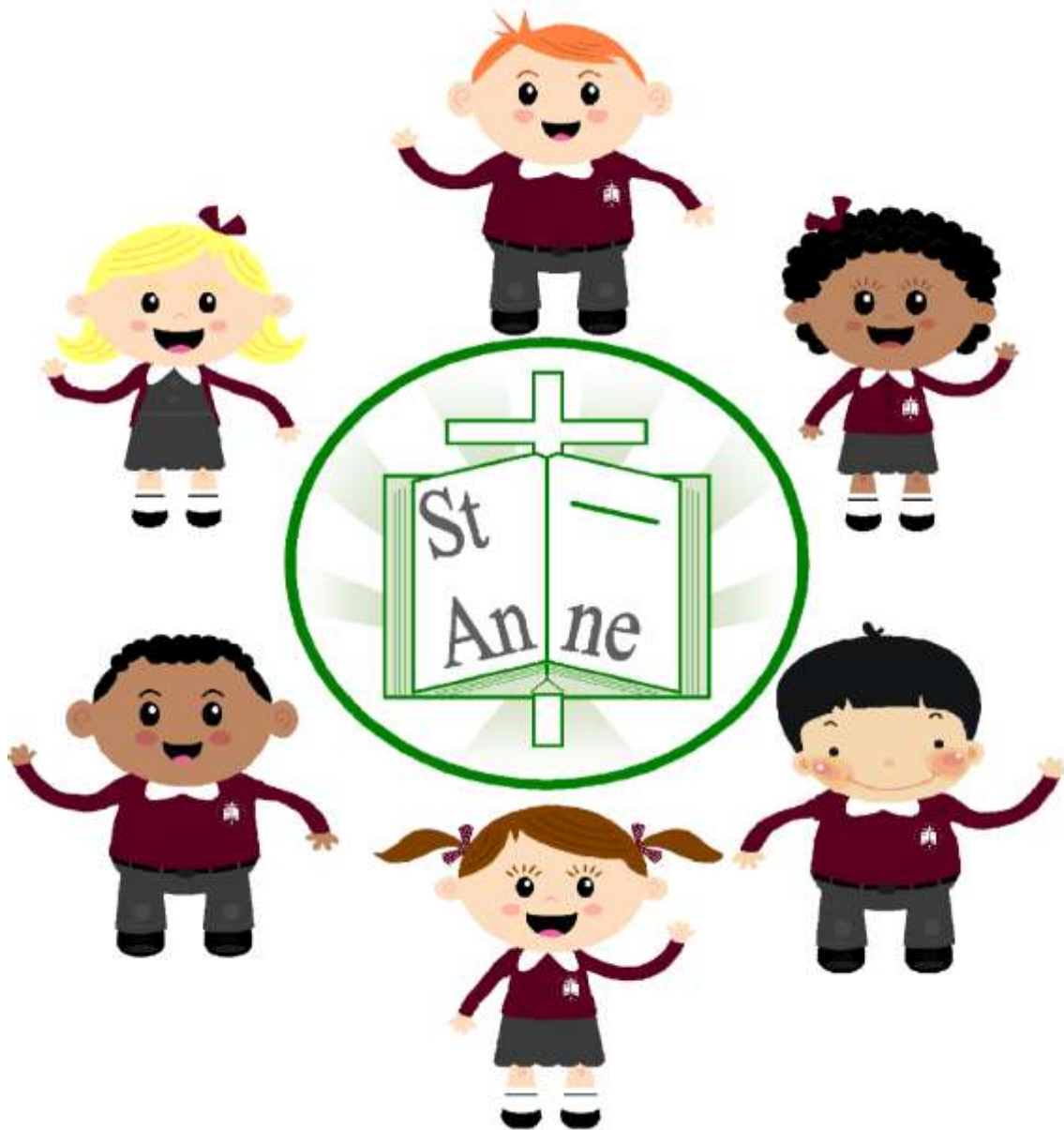


Charging and Remissions Policy



Approved by: The Governing Board

Date: January 2026

Review date: January 2027



St Anne Stanley CE Primary School

CHARGING AND REMISSIONS POLICY

Aims

Our school aims to:

- Have robust, clear processes in place for charging and remissions
- Clearly set out the types of activity that can be charged for and when charges will be made

Legislation and guidance

This policy is based on advice from the Department for Education (DfE) on [charging for school activities](#) and [the Education Act 1996](#), sections 449-462 of which set out the law on charging for school activities in England.

Definitions

Charge: a fee payable for specifically defined activities

Remission: the cancellation of a charge which would normally be payable

Roles and responsibilities

The governing board

The governing board has overall responsibility for approving the charging and remissions policy, but can delegate this to a committee, an individual governor or the headteacher.

The governing board also has overall responsibility for monitoring the implementation of this policy.

Headteacher

The headteacher is responsible for ensuring staff are familiar with the charging and remissions policy, and that it is being applied consistently.

Staff

Staff are responsible for:

Implementing the charging and remissions policy consistently

Notifying the headteacher of any specific circumstances which they are unsure about or where they are not certain if the policy applies

The school will provide staff with appropriate training in relation to this policy and its implementation.

Parents

Parents are expected to notify staff or the headteacher of any concerns or queries regarding the charging and remissions policy.

Where charges cannot be made

Below we set out what we **cannot** charge for:

Education

Admission applications

Education provided during school hours (including the supply of any materials, books, instruments or other equipment)

Education provided outside school hours if it is part of:

- The national curriculum
- A syllabus for a prescribed public examination that the pupil is being prepared for at the school
- Religious education
- Instrumental or vocal tuition, for pupils learning individually or in groups, unless the tuition is provided at the request of the pupil's parent
- Entry for a prescribed public examination if the pupil has been prepared for it at the school
- Examination re-sit(s) if the pupil is being prepared for the re-sit(s) at the school

Transport

Transporting registered pupils to or from the school premises, where the local authority has a statutory obligation to provide transport

Transporting registered pupils to other premises where the governing board or local authority has arranged for pupils to be educated

Transport that enables a pupil to meet an examination requirement when he or she has been prepared for that examination at the school

Transport provided in connection with an educational visit

Residential visits

Education provided on any visit that takes place during school hours

Education provided on any visit that takes place outside school hours if it is part of:

- The national curriculum
- A syllabus for a prescribed public examination that the pupil is being prepared for at the school
- Religious education
- Supply teachers to cover for those teachers who are absent from school accompanying pupils on a residential visit

Where charges can be made

Below we set out what we **can** charge for:

Education

Any materials, books, instruments or equipment, where the child's parent wishes him or her to own them

Optional extras (see below)

Music and vocal tuition, in limited circumstances (see below)

Certain early years provision

Community facilities

Examination re-sit(s) if the pupil is being prepared for the re-sit(s) at the school **and** the pupil fails, without good reason, to meet any examination requirement for a syllabus

Optional extras

We are able to charge for activities known as 'optional extras'. In these cases, schools can charge for providing materials, books, instruments or equipment. The following are optional extras:

Education provided outside of school time that is not part of:

- The national curriculum
- A syllabus for a prescribed public examination that the pupil is being prepared for at the school
- Religious education
- Examination entry fee(s) if the registered pupil has not been prepared for the examination(s) at the school
- Transport (other than transport that is required to take the pupil to school or to other premises where the local authority or governing board has arranged for the pupil to be provided with education)
- Board and lodging for a pupil on a residential visit
- Extended day services offered to pupils (such as breakfast clubs, after-school clubs, tea and supervised homework sessions)

When calculating the cost of optional extras, an amount may be included in relation to:

- Any materials, books, instruments or equipment provided in connection with the optional extra
- The cost of buildings and accommodation
- Non-teaching staff
- Teaching staff engaged under contracts for services purely to provide an optional extra (including supply teachers engaged specifically to provide the optional extra)
- The cost, or an appropriate proportion of the costs, for teaching staff employed to provide tuition in playing a musical instrument, or vocal tuition, where the tuition is an optional extra

Any charge made in respect of individual pupils will not be greater than the actual cost of providing the optional extra activity, divided equally by the number of pupils participating.

Any charge will not include an element of subsidy for any other pupils who wish to take part in the activity but whose parents are unwilling or unable to pay the full charge.

In cases where a small proportion of the activity takes place during school hours, the charge cannot include the cost of alternative provision for those pupils who do not wish to participate.

Parental agreement is necessary for the provision of an optional extra which is to be charged for.

Music tuition

Schools can charge for vocal or instrumental tuition provided either individually or to groups of pupils, provided that the tuition is provided at the request of the pupil's parent.

Charges may not exceed the cost of the provision, including the cost of the staff giving the tuition.

Charges cannot be made:

- If the teaching is an essential part of the national curriculum
- If the teaching is provided under the first access to the Key Stage 2 instrumental and vocal tuition programme
- For a pupil who is looked after by a local authority

Residential visits

We can charge for board and lodging on residential visits, but the charge must not exceed the actual cost.

Voluntary contributions

As an exception to the requirements set out in this policy thus far, the school is able to ask for voluntary contributions from parents to fund activities during school hours which would not otherwise be possible.

Some activities for which the school may ask parents for voluntary contributions include school trips and sports activities.

There is no obligation for parents to make any contribution, and no child will be excluded from an activity if their parents are unwilling or unable to pay.

If the school is unable to raise enough funds for an activity or visit then it will be cancelled.

Activities we charge for

The school will charge for breakfast and after-school club.

This provides a term time only wraparound school childcare service for 3-11 year olds at the Breakfast and After School Club. Parents will be charged for use of the service and the session times and charges are as follows:

- Full breakfast club session including snack - 7.45am until 8.45am - £3.00
- Full After School Club until 6pm – (pre-arrangement required) £10

Payments methods accepted include tax-free childcare, vouchers, student finance, cash and ParentPay app.

At St Anne's we support our parents as best we can and aim to keep any costs to a minimum. Breakfast and after-school club costs are calculated based on the cost of staff wages and consumables only i.e. bread, milk, snack food. All resources utilised are not charged for, including the added costs of cleaning, electricity etc. Our aim is to keep costs as low as possible but to provide the best possible opportunities for our children.

Remissions

In some circumstances the school may not charge for items or activities set out in this policy thus far. This will be at the discretion of the governing board and will depend on the activity in question.

Remissions for residential visits

Parents who can prove they are in receipt of any of the following benefits will be exempt from paying the cost of board and lodging for residential visits:

Income Support

Income-based Jobseeker's Allowance

Income-related Employment and Support Allowance

Support under part VI of the Immigration and Asylum Act 1999

The guaranteed element of Pension Credit

Child Tax Credit (provided that Working Tax Credit is not also received and the family's annual gross income does not exceed £16,190)

Working Tax Credit run-on (this is paid for 4 weeks after an individual stops qualifying for Working Tax Credit)

Universal Credit (if the application was made on or after 1 April 2018, the family's income must be less than £7,400 per year – after tax and not including any benefits)

Delivery of Early Years Funding

We offer term time funded places only.

All 3 and 4 year old children have an entitlement to 15 hours funded entitlement and this entitlement must always be completely free at the point of delivery.

A Parental Declaration form will be required in relation to the funded 15 hours provision. Additional sessions over the 15 hours per week entitlement may be available but this is dependent upon the number of children who are attending for funded sessions and to whom priority will be given. Sessions will consist of 3 hours AM/PM and will be charged at £15 per session.

Flexibility around days being swapped is dependent on numbers.

We offer 30 hours for those parents who are eligible but if not, parents can also pay at a charge of £15 per session.

Reminders for code renewals are regularly sent to parents giving notice of expiry date.

Invoices will be issued to parents who pay for additional sessions.

No extra charges are requested other than the £1 voluntary Snack Money per week to supplement bagels/fruit supplied by school.

Parents supply pull ups/wipes/nappy bags if appropriate though school does have a back up supply if required.

Monitoring arrangements

Mrs. Julie Simons Headteacher monitors charges and remissions and ensures these comply with this policy. This policy will be reviewed by Mrs. Julie Simons Headteacher every year. At every review, the policy will be approved by the governing board.