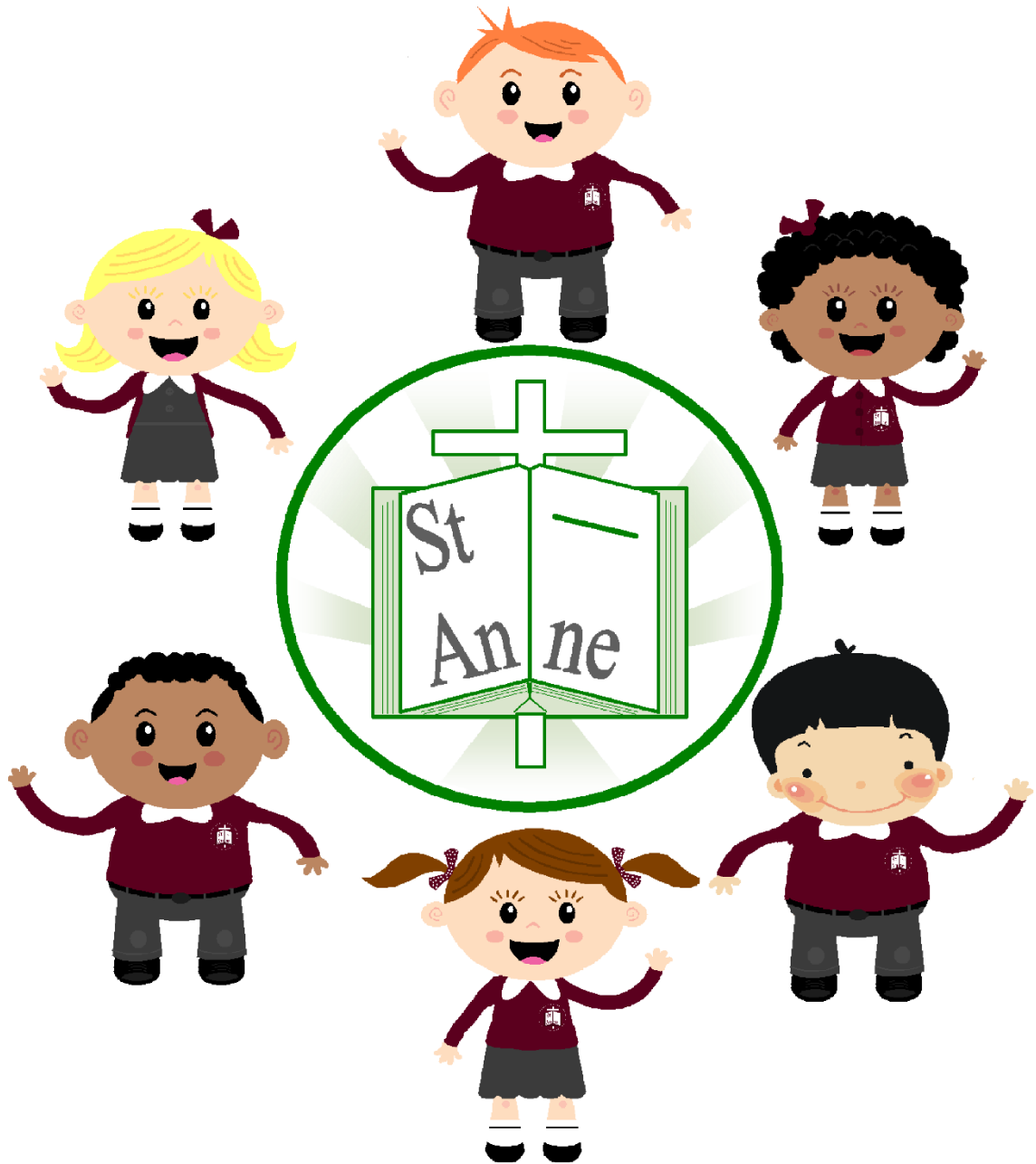


St Anne (Stanley) C of E Primary School

Homework Policy



Approved by: The Governing Board

Date: June 2022

Review date: June 2023



St Anne Stanley C of E Primary School

HOMework POLICY

Rationale

At St Anne Stanley C of E Primary School, we believe that children deserve a high-quality education at school together with quality time with family at home. We strive to provide our pupils with a quality education through following an evidence-based approach to our teaching and learning practices. Our approach to homework is based on research drawn from The Education Endowment Foundation (EEF) which indicates that the impact of primary-age homework on academic attainment is minimal.

When implementing teaching and learning strategies, St Anne's attend to those strategies that are proven to generate the largest gains. According to the EEF, there are many strategies, other than homework, with far greater impact on pupil progress without limiting valuable family time e.g. providing pupils with quality feedback.

Home Learning

Home learning includes any activities that children engage in outside of school that contributes to their learning. Home learning encompasses a whole variety of activities instigated by teachers and parents to support children's learning. For example, parents who spend time reading stories to their children at bedtime are engaging in home learning.

At St Anne Stanley, our hope is that our approach to homework will allow families the time to let their children's interests and passions guide their learning at home. While our rigorous academic standards are fostered in the classroom, your family is empowered to explore and create your own path for learning at home. Class teachers are also happy to provide ideas for continuing learning at home.

Expectations for Home Learning

- Learning should still take place at home with or without homework. Our policy gives families the freedom to meet home learning expectations as part of quality family time.
- St Anne's home learning expectations centre on playing practical and online maths games, daily reading, practising spellings and broadening pupils' vocabulary through learning their 'words of the week'.

Playing Practical and Online Maths Games

At St Anne Stanley, we support our families to develop their children's mathematical skills and understanding at home. With a view to supporting our pupils learning, our children have access to a wide range of practical maths games and online platforms such as My Maths and TT Rockstars.

As part of our curriculum, we encourage our children to use their developing understanding of mathematics in the real world. We are always looking for ways to apply our mathematical skills to solving everyday problems.

Daily Reading

Reading enjoyment has been reported as more important for children's educational success than their family's socio-economic status. Moreover, research demonstrates the importance of reading for pleasure for both educational purposes as well as personal development (DfE, 2012).

At St Anne's children will learn to read with confidence, fluency and understanding, providing them with the skills required to achieve a lifetime of enjoyment through reading. At St Anne's we understand that children become successful readers when reading forms part of their daily routine. As part of our home learning policy, children are encouraged to engage in daily reading at home. Children are supported to read at home through being provided with books that reflect their reading attainment together with books that reflect their interests. Parents are encouraged to support their child(ren) by listening to them read, reading to them and discussing the pictures/text.

Spelling Practise

Spelling is a fundamental literacy skill that enables children to develop strong writing skills as they grow. At St Anne's we believe that it is essential to cultivate the required spelling skills in young children, to help them become literate, articulate adults.

In Reception, Year 1 and Year 2 children have daily phonic lessons where they learn phonemes and graphemes, spelling patterns and high frequency words. In Years 3, 4, 5 and 6 children learn new spelling patterns as well as revising those already taught. Teachers provide opportunities throughout the week for pupils to practise and apply their developing skills. In addition to this, parents are encouraged to support their child(ren) to practise their spellings at home through paper-based or online activities i.e. Spellzone.

Words of the Week

A robust vocabulary improves all areas of communication — listening, speaking, reading and writing. At St Anne's we understand the link between a child's vocabulary level and their achievement across the curriculum. To this end, we actively broaden our pupils' vocabulary. Our pupils are provided with 'words of the week'; words comprised of academic vocabulary

suitable to pupils' differing ages/stages of development. Academic vocabulary is defined as words that are traditionally used in academic dialogue and text. These types of words are used to explain a concept; they are not necessarily common or frequently encountered in informal conversation.

A child needs to hear a new word multiple times before they will begin to use it. As part of our home learning policy, parents are encouraged to support their child(ren) to learn their 'words of the week' through incorporating those words into day-to-day conversations with their child. Parents are encouraged to support their child to look for as many opportunities as possible to verbally use their 'words of the week'.

Online Platforms

Pupils will also have access to a wide range of online platforms through which parents can promote learning across the curriculum. If a parent needs a device to support home learning, they are advised to let their child's class teacher know so that they can arrange for the loan of a device.

Online Platform	Curriculum links	Available to
Oxford Owl: https://www.oxfordowl.co.uk/	English	EYFS, KS1 & KS2
Teach Your Monster to Read: https://www.teachyourmonstertoread.com/	English	EYFS & KS1
Lexia: https://www.lexiacore5.com/register	English	KS1
Reading Plus: https://student.readingplus.com/seereader/api/sec/login	English	KS2
Spellzone: https://www.spellzone.com/login/login.cfm		
My Maths: https://www.mymaths.co.uk/	Mathematics	KS1 & KS2
TT Rock Stars: https://ttrockstars.com/	Mathematics	EYFS, KS1 & KS2
Education City: https://www.educationcity.com/	English Mathematics Science	EYFS, KS1 & KS2

<p>Oak Learning Academy: https://www.thenational.academy/</p>	<p>English Mathematics Science RE History Geography PSHE Music</p>	<p>EYFS, KS1 & KS2</p>
-------------------------------------------------------------------------------------------------------------------	---------------------------------------------------------------------------------------------	---------------------------------

You can find out what your child is learning at school by visiting their Class Webpage on our School Website: <https://st-anne-stanley-school.co.uk/>

Expectations for Year 6: Supporting Transition to Second-Level Education

According to the EEF, research studies in secondary schools show that homework has a greater impact on pupil progress than in primary schools. With a view to supporting our pupils transitioning to second-level education, homework is introduced in Year 6. Teachers are conscientious about balancing the homework load, teaching pupils the skills to manage the work, and making sure that the homework assigned always serves a purpose and is connected to helping our pupils achieve the highest academic standards.

Monitoring and Evaluation

The senior leadership team (SLT) will monitor the implementation of this policy. The policy will be reviewed annually by the headteacher and governing body.