



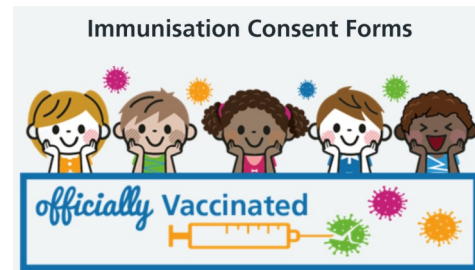
It has been wonderful to welcome all of our children and families back into school this month. It is a real credit to all of our St. Anne families that children have come back with such a positive attitude with smiles on their faces - what a fantastic way to start the school year!

We also extend a very warm welcome to our new children and their families. We hope that you and your children have enjoyed your first few weeks at St. Anne's - it's so rewarding to see new relationships becoming friendships and we hope that you're enjoying life at St. Anne's 😊



Our school value for this half term is **Honesty**. **Honesty** is marked as being free from deceit of untruthfulness, and being sincere. The Christian life should be one marked with integrity and honesty, yet because we all sin and find it easy to do so, honesty is something we must work hard at.

"You will know the truth and the truth will set you free."



A reminder, if you would like your child to have the nasal flu immunisation, please complete the online form:

<https://econsent.merseycare.nhs.uk/>

If you have difficulties accessing the link contact the Liverpool Immunisation Team on: **(0151) 295 3833** .

Children that are different year groups for their age, will need to add the year group according to their child's DOB.

We understand that some people may not wish their child to have a flu vaccine, if this is the case, please still complete the form and choose the 'opting out' option.



Our Year 5 and Year 6 classes have been working hard in preparation for their Harvest Festival Service which is due to take place Wednesday 28th September at St. Anne's Church. The service will start at 10am promptly and parents, families and carers are invited to come and share in this engaging celebration. We are also accepting food donations (tins and packets only please - no fresh produce). Please send in donations with your child or alternatively, drop them off at our school office before our service anytime before the 28th.



Our Year 6 children are back at Wavertree Aquatics Centre this term and pupils have really enjoyed their first couple of swimming lessons with their new swimming teachers - it's so nice to be back in the pool again and lovely to see how the children's confidence and water skills are developing each week! Keep up all of your hard work Year 6 - we're very proud of you 😊



Admissions are now open for parents of children due to start Reception or Year 7 in September 2023. All parents will need to apply online via the link below.

<https://liverpool.gov.uk/schools-and-learning/school-admissions/how-to-apply/>

The closing date for Year 7 admissions is October 31st.



If you have not done already, could you please fill out the emergency forms and permission slips and hand them back to your child's class teacher. These forms need to be filled out by **everyone** at the **beginning of each school year** in order to ensure our records are up to date.



As a school, we are very proud to announce that we have recently been awarded 'The Liverpool Health and Wellbeing Silver Award'. The new award celebrates our current whole school good practice, focusing on emotional wellbeing and mental health, healthy eating, physical activity and PSHE.



THINGS2HELP



Are you a parent and need some support?

If you need any support with issues such as:

- Family and caring responsibilities
- Mental health and physical wellbeing
- Financial difficulties
- Employment and volunteering
- Social activities and support networks
- Housing issues
- Learning
- Anything else, not listed, that is affecting your day-to-day life.

A Pathways Advisor can help you.

You can book an appointment or drop into your children's centre. Your nearest Pathways Advisor services are:

Wavertree Children's Centre: Monday - 09:30am - 3:30pm
 Yew Tree Children's Centre: Monday - 09:30am - 3:30pm
 County Children's Centre: Tuesday - 09:00am - 3:00pm
 Clubmoor Children's Centre: Alternate Tuesdays - 09:30am - 3:30pm
 Dingle Children's Centre: Alternate Tuesdays - 09:30am - 3:30pm
 Belle Vale Children's Centre: Wednesday - 09:30am - 3:30pm
 Kensington Children's Centre: Wednesday - 09:30am - 3:30pm
 Tuebrook Children's Centre: Thursday - 09:30am - 3:30pm
 Childwall & Woolton Children's Centre: Thursday - 09:30am - 3:30pm
 Garston Children's Centre: Friday - 09:00am - 3:00pm
 Picton Children's Centre: Friday - 11:00am - 3:30pm



28th September - Year 5 and 6 Harvest Festival

13th October - School Photographs

W/C 17th October - Parents Evening

20th October - Show Racism the Red Card (wear something red to school)

21st October - Training Day

24th - 28th October - Half Term