

St. Anne (Stanley) C of E
Primary School

Newsletter

Friday 23rd October 2020



A very warm welcome to the second newsletter of our school year.

We had a Health and Safety visit this week from a HMI Inspector. The inspection looked at the health and safety measures we'd put in place to manage Covid 19 within our school and how we work to keep our children, staff and parents safe. Our risk assessments and health and safety policies were all examined too. At the end of the visit, the HMI Inspector was extremely pleased with what we have in place and left with no further recommendations.

In preparation for Remembrance Day on the 11th November, we will be holding our annual poppy sale. If you would like to purchase a poppy or related remembrance day merchandise please send your child into school with a donation after the half term break. The Royal British Legion have printed a suggested donation for their merchandise and donations are suggested as follows: zip pull - 50p, reflector - 50p, silicon wristband - £1 and snap band - £1.50.



A massive thank you to all those that supported our Harvest appeal. All donations were gratefully received and passed on to Reverend Emma and her team at the Parish Church of St. Anne Stanley. All donations will now be forwarded on to local foodbanks and will be used to help our local community.



Our church also celebrated its 130th birthday on the 27th September, an impressive milestone indeed!



Congratulations and a massive 'well done' to our Year 1 teacher and art coordinator, Mrs Bell. Mrs Bell gained a distinction in her Inclusion, Special Educational Needs and Disabilities Masters Degree this month - we're very proud of her marvellous achievement 😊



We hope that the children enjoyed our school 'fun day' today. We are so proud of all of our St. Anne pupils and their amazing attitude and resilience during these difficult times. The children have adapted amazingly to the changes that we have had to make around the school, showing a real maturity. Thank you everyone for your hard work - you are a credit to your families 😊



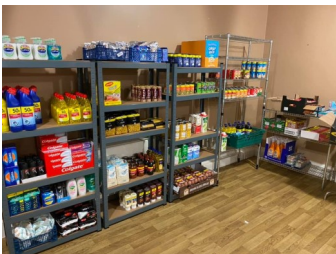
The Covid-19 lock down, has left many families lonely at home and in isolation. Many families, no matter what their circumstances need a listening ear and our parish vicar, Reverend Emma Williams is always ready to listen, talk and help in any way that she can.



She can be reached any day of the week on her office number **(0151) 228 2426** (please leave a message if you reach answerphone as all calls will always be returned asap).

Or alternatively, you can drop her a line through e-mail: **revdem1411@btinternet.com**

As mentioned in our last newsletter, The Joseph Lappin Centre are still running their social supermarket, 'Food Club' every Tuesday from 12:00 -2:00pm. The supermarket is aimed at the local Old Swan community and is for our unemployed, low waged, disabled, retired and vulnerable households. They ask you to bring ID to register and then, for £3.50, you can choose 10 different food items from their 'supermarket'.



THE JOSEPH LAPPIN CENTRE
~ FOOD CLUB ~
 YOUR CHOICE OF 10 DIFFERENT ITEMS FOR £3.50
 EVERY TUESDAY (12:00 NOON - 2:00 P.M.) - DROP IN ONLY

FRESH MEAT, CHEESE, TINNED & DRIED GOODS, FROZEN FOODS, CLEANING PRODUCTS, TOILETRIES, PET FOODS.

SUPPORTED BY OLD SWAN WARD COUNCILLORS

Liverpool Lighthouse helpline also offers support to local members of the community who are looking for someone to talk to. They have trained counsellors who are available to support those who are going through deeper situations such as bereavement and suicidal thoughts. Their services include:

- Signposting i.e. direction to a food bank
- Counselling
- Someone to talk to
- Lost a loved one and need someone to talk to
- Suicidal thoughts
- And more

Their helpline is open from Monday to Friday, 11am – 1pm on (0151) 459 7667

1pm – 2pm for bereavement calls on (0151) 459 7668

You can also email: info@lighthouse.org.com

Helpline

Do you know someone in need?
Are you in need?

Food bank Hug a mug	0151 909 3452
Homeless or in rent arrears	0800 731 6844
Universal Credit claim helpline	0800 144 8 444
Struggling to make ends meet	0800 456 1523
Rough sleeping	0300 123 2041
Domestic abuse	0808 2000 247
Men advice line	0808 801 0327
Volunteer support	0808 196 3646
North Liverpool Food bank	0151 226 3406
Samaritans	116 123 (24hours)
SANEline	0300 304 7000

ADVICE ABOUT COVID 19

Go to www.nhs.uk

111 | Covid 19 Symptoms

WWW.LIVERPOOLLIGHTHOUSE.COM

Stoneycroft Salvation Army (next to our school) are also offering emergency food parcels. They will be outside their Community Church Centre every Friday 11am - 12pm. Please get in touch if they can help in any way.

You can email: santomlin@salvationarmy.org.uk

Or call **07792259087**

