

Year 1



Art and Design: Landscapes using Different Media

Techniques



I know how to draw a horizon line to represent where the sky meets the land or sea.



I know how to identify the colours used in an artist's works. I know how to mix colours to colour-match and apply paint carefully with a paintbrush.

TINTS ORIGINAL SHADES

I know how to use different tints and shades to create a tonal representation. I know that light colours stand out more and darker colours recede.

I know how to add texture to my artwork by using different materials to show how things feel when touched.



Vocabulary

Composition:

The arrangement of elements within a work of art.

Line:

Lines can be vertical, horizontal, diagonal, zigzag or curved.

Texture:

The way something feels to touch, or looks to the eye.

Tone:

The lightness or darkness of something.

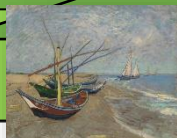
Tint:

A mixture of a colour with white to make the colour lighter.

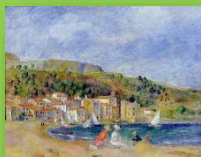
Shade:

A mixture of a colour with black to make the colour darker.

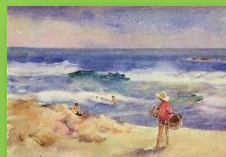
Inspirational Works



Fishing Boats on the Beach at Saintes-Maries-de-la-Mer (1888) by Danish artist Vincent van Gogh.



Le Lavandou (1874) by French artist Pierre-Auguste Renoir



Boy on the Sand (1908) by Spanish artist Joaquin Sorolla.



Summer Day at the South Beach of Skagen (1893) by Danish artist Peder Severin Krøyer.